

Providence R. I.  
This plat accompanies  
our report of this date.

PROVIDENCE, R. I.  
CITY ENGINEER'S OFFICE  
STREET LINE DEPT.

Sept 12, 1887

013224

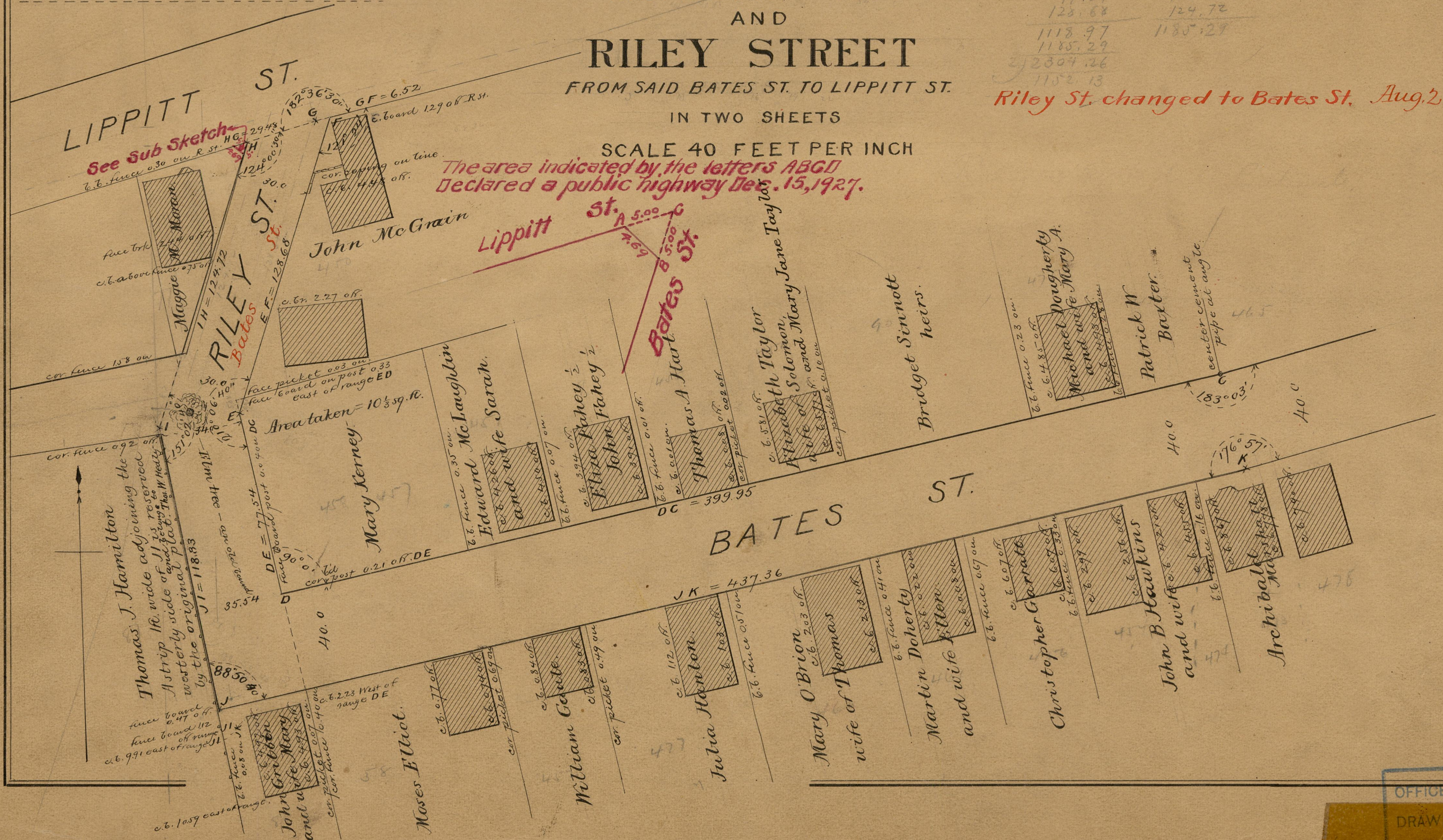
PLAT OF  
**BATES STREET**  
FROM MALLET ST. TO A POINT ABOUT 300 FT.  
EAST OF NORTH MAIN ST.  
AND  
**RILEY STREET**  
FROM SAID BATES ST. TO LIPPITT ST.  
IN TWO SHEETS

SCALE 40 FEET PER INCH

The area indicated by the letters ABCD  
Declared a public highway Dec. 15, 1927.

31.40	90.14
381.40	414.24
399.95	437.36
77.54	118.83
128.68	124.72
1118.97	1185.27
1185.29	
2304.26	
1152.13	

Riley St. changed to Bates St. Aug. 2, 1894.



83  
A-55

OFFICE No. 9373  
DRAWER 83  
SHEET A-55